

# Technique

## Eye shape



Upturned Eyes



Close Set Eyes



Monolid Eyes



Downturned Eyes



Wide Set Eyes



Protruding Eyes



Round Eyes



Almond Eyes



Hooded Eyes

### Almond eyes

This eye shape is a very common eye shape. We would recommend using a blend of straighter lash curls, on these eyes like J & B curls on the inner eye area & blending with a more lifted lash like a B, C or D curl on the outer corners of the eye.

To create a cat eye look, lift lashes on the outer edge with more drama.

### Monolid and hooded eyes

These eyelids usually have a defined crease in them. We would recommend using some of our straighter lashes, so our B & J curls are best for these eyes.

We want to try & create more of a wide awake, brighter look to the eye. Lift from the natural lash line, & give length & fullness rather than curl, which could get lost with the heaviness of the eyelid.

# Technique

## Eye shape

### Downturned eyes

Clients with these shape eyes we would recommend the cat eye lash look. We want to lift the outer corners of the eye.

To give the appearance of a lifted, more symmetrical look to the eye we would use shorter fuller looking lashes rather than longer. Blend your curls from J, B to a C or D curl, finishing with the longer lashes on the outer corners to a good lift.

We would recommend starting with a 7mm - 8mm on the inner with a J or B curl, blending into 9mm - 10mm B curls in the middle of the eye into 11mm - 12mm C curls back to the very outer edge to 11mm length.

### Close set eyes

For clients with this eye shape we would recommend longer lashes on the outer edge again to create width, so a lifted curl would create this look.

Again, blend your curls and lengths, J, B, C & D, whatever curl you think the lashes can take.

### Round eyes

Clients with these shape eyes, we would recommend straighter less curled lashes so J or B curls are perfect.

Using C or D curls can make the eyes look too big, as the eyes are already very open and round. Soft natural lashes that are not too long are best to use on these eyes.

# Technique

## Eye shape

### Protruding eyes

For clients with these eyes, we would recommend using J or B curls.

Again, we don't want to create too much drama to an already protruding eye. So natural subtle lashes are key for these eyes. Not too much length just fullness, & not much lifting.

### Upturned eyes

For clients with these eyes, we would recommend using J or B curls.

Blending J to B on the outer corners, but no curlier as this could create too much of a lift, to an already upturned eye. We would also not recommend too long on the outer edge maybe finish with an 11-12mm maximum lash length.

### Wide set eyes

For clients with these shape eyes we would recommend blending your curls again or single use curls to finish with less length on the outer edge. So ideally whatever you choose to use, blend longer in the middle like a Dolly Lash shape - shorter inner eye, longer in the middle of the eye, going back to shorter on the outer eye area.

Creating the lift in the centre of the eyes makes the eyes appear closer together rather than widening them.



# Technique

## Eye shape

### Standard shape eyes

These eyes can take any shape, curl & length of lashes.

The natural lashes have to be taken into consideration, including the lash lengths, condition and curl.

### Remember:

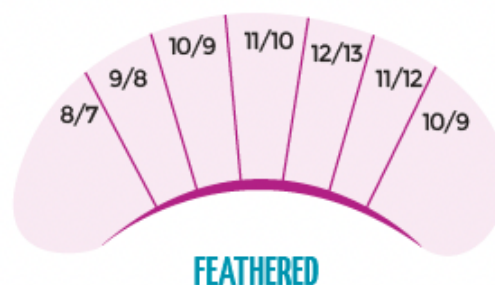
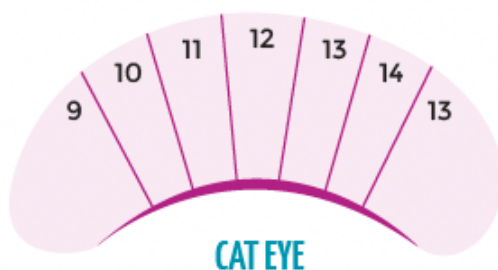
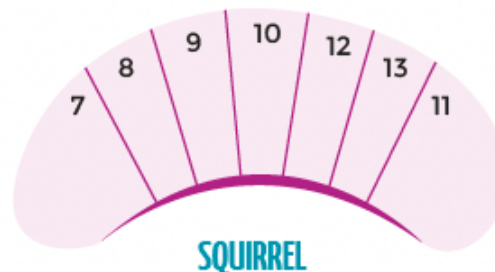
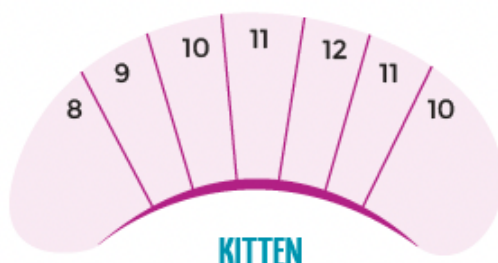
- Do not apply lashes on the very outside edge as they may droop
- Do not apply lashes to the very inside edge of the eye as the lashes here are very thin & will rarely hold the extension
- For small deep-set eyes bring the longer extensions through the middle of the eye
- For eyes that drop down at the corner, blend the longer extensions onto the outside edge to lift the eye
- Curls can be blended & used to give drama & fullness where needed
- Often in the inner corner of the eye a B curl can be used graduating out to a C curl. This will blend the lashes & give a dramatic lift & curl in the middle & outer edge of the client's lashes

# Technique

## Lash mapping

Using your gel eye pads, draw on them lightly with a marker mapping out the lashes lengths that you are going to use.

The diagram below gives an idea of some of the different shapes and lashes that are needed to recreate a look. Each style represents the right eye looking down from behind the client.



# Technique

## Lash mapping

**CAT EYE STYLE**



**SQUIRREL STYLE**



**DOLLY LASH**

